

SA Rod end BEM30-60-501-DURBAL - BEM30-60-501-DURBAL

<https://www.123bearing.com/bearing-housing/rod-end/sa/bem30-60-501-durbal>

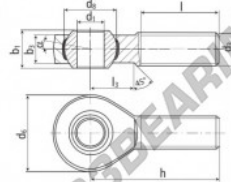
BEM30-60-501



male thread;
maintenance free,
adapter sizes
according to
DIN ISO 12240-4,
series K



**DURBAL® heavy-duty rod ends
with integral spherical
plain bearing in stainless steel**



rod end housing:
stainless steel 1.4301, rolled thread,
surface with pickling treatment

joint ball:
stainless steel, hardened and ground,
surface superfinished

race:
nylon / teflon / glass fibre compound

tolerances:
see page 10

order number		measurements [mm]	
type	right-hand thread left-hand thread	d ₁	d ₂
BEM 30 -60	-501	30	M 30 x 2
		d ₃	d ₄
		70	50,75
		h ₁	h ₂
		37	25,0

measurements [mm]			weight		basic load rating		
type	h	l	α ₁ ¹⁾	α ₂ ²⁾	dyn.	stat.	
			[°]	[°]	[N]	[N]	
BEM 30	110	66	35	17,0	10,5	1,015	33800 97100

PRODUCT FEATURES

Brand	DURBAL
N° Ean13	3663952509907
Inside diameter	30 mm
Outside diameter	70 mm
Thickness	37 mm
Type	SA
Weight	1015 g
Thread	Right-hand thread
Lubrication	without
Packaging	1

contact@123bearing.com

(646) 712 9672

CRT4 de Lesquin 60 Rue Du Haut De Sainghin 59273 Fretin FRANCE