

SA Rod end BEM25-60-501-DURBAL - BEM25-60-501-DURBAL

<https://www.123bearing.com/bearing-housing/rod-end/sa/bem25-60-501-durbal>

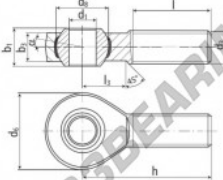
BEM25-60-501



male thread;
maintenance free,
adapter sizes
according to
DIN ISO 12240-4,
series K



**DURBAL® heavy-duty rod ends
with integral spherical
plain bearing in stainless steel**



rod end housing:
stainless steel 1.4301, rolled thread,
surface with pickling treatment

joint ball:
stainless steel, hardened and ground,
surface superfinished

race:
nylon / teflon / glass fibre compound

tolerances:
see page 10

order number		measurements [mm]		measurements [mm]		weight		basic load rating	
type	right-hand thread / left-hand thread	d ₁	d ₂	d ₃	d ₄	l ₁	l ₂	C	C ₀
BEM 25 -60	-501	25	M 24 x 2	60	42,80	31	22,0		
type		measurements [mm]		weight		basic load rating		dyn. stat.	
h	l	l ₃	α ₁ [°]	α ₂ [°]	[kg]	C	C ₀	[N]	[N]
BEM 25	94	57	30	15,0	10,0	0,630	27860	79100	

PRODUCT FEATURES

Brand	DURBAL
N° Ean13	3663952509877
Inside diameter	25 mm
Outside diameter	60 mm
Thickness	31 mm
Type	SA
Weight	630 g
Thread	Right-hand thread
Lubrication	without
Packaging	1

contact@123bearing.com

(646) 712 9672

CRT4 de Lesquin 60 Rue Du Haut De Sainghin 59273 Fretin FRANCE