

SA Rod end BEM22-60-501-DURBAL - BEM22-60-501-DURBAL

<https://www.123bearing.com/bearing-housing/rod-end/sa/bem22-60-501-durbal>

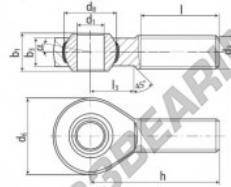
BEM22-60-501



male thread;
maintenance free,
adapter sizes
according to
DIN ISO 12240-4,
series K



**DURBAL® heavy-duty rod ends
with integral spherical
plain bearing in stainless steel**



rod end housing:
stainless steel 1.4301, rolled thread,
surface with pickling treatment

joint ball:
stainless steel, hardened and ground,
surface superfinished

race:
nylon / teflon / glass fibre compound

tolerances:
see page 10

order number		measurements [mm]		measurements [mm]		weight		basic load rating	
type	right-hand thread	d ₁	d ₂	d ₃	b ₁	b ₂	[kg]	C	C ₀
BEM 22 -60	-501	22	M 22 x 1,5	54	38,05	28		23480	63600
measurements [mm]		weight		basic load rating					
type	h	l	l ₃	α ₁ [°]	α ₂ [°]				
BEM 22	84	51	26	15,5	10,0	0,440		23480	63600

PRODUCT FEATURES

Brand	DURBAL
N° Ean13	3663952509860
Inside diameter	22 mm
Inside diameter	0.866" inch
Outside diameter	54 mm
Outside diameter	2.126" inch
Thickness	28 mm
Thickness	1.102" inch
Type	SA
Weight	440 g
Thread	Right-hand thread
Lubrication	without
Packaging	1

contact@123bearing.com

(646) 712 9672

CRT4 de Lesquin 60 Rue Du Haut De Sainghin 59273 Fretin FRANCE