

SA Rod end BEM20-60-501-DURBAL - BEM20-60-501-DURBAL

<https://www.123bearing.com/bearing-housing/rod-end/sa/bem20-60-501-durbal>

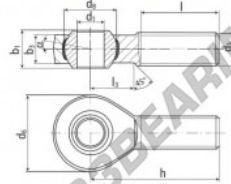
BEM20-60-501



male thread;
maintenance free,
adapter sizes
according to
DIN ISO 12240-4,
series K



**DURBAL® heavy-duty rod ends
with integral spherical
plain bearing in stainless steel**



rod end housing:
stainless steel 1.4301, rolled thread,
surface with pickling treatment

joint ball:
stainless steel, hardened and ground,
surface superfinished

race:
nylon / teflon / glass fibre compound

tolerances:
see page 10

order number		measurements [mm]						
type	right-hand thread	d ₁	d ₂	d ₃	d ₄	b ₁	b ₂	
BEM 20 -60	-501	20	M 20 x 1,5	50	34,87	25	18,0	
measurements [mm]		weight		basic load rating				
type	h	l	l ₃	α ₁ ¹⁾ [°]	α ₂ ²⁾ [°]	dyn	stat.	
BEM 20	78	47	28	14,5	9,0	0,327	18960	54800

PRODUCT FEATURES

Brand	DURBAL
N° Ean13	3663952509839
Inside diameter	20 mm
Outside diameter	50 mm
Thickness	25 mm
Type	-
Weight	327 g
Thread	-
Lubrication	-
Packaging	-

contact@123bearing.com

(646) 712 9672

CRT4 de Lesquin 60 Rue Du Haut De Sainghin 59273 Fretin FRANCE