

SA Rod end POSL22-DURBAL - POSL22-DURBAL

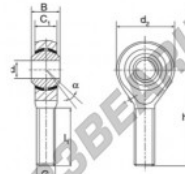
<https://www.123bearing.com/bearing-housing/rod-end/sa/posl22-durbal>

POSL22



Description: DIN ISO rod end K series. Sliding combination steel / heavy duty bronze.

male thread:
maintenance free,
according to
DIN ISO 12240-4,
series K



Rod end body:
surface zinc plated
Sliding combination:
steel / heavy duty bronze
Inner ring:
bearing steel, hardened, ground and
spherical surface chromium plated
Outer ring:
heavy duty bronze with lubrication
Lubrication:
lubrication required

order number	right hand thread	left hand thread	measurement [mm]				
			B	C ₁	d ₁	G	
POSL 22			22	M 22 x 1,5	28	20,00	54

type	measurement [mm]		α [°]	load rating C ₀ [kN]	weight [kg]
	l ₁ min	h			
POS / POSL 22	51	84	15	57,0	0,480

PRODUCT FEATURES

Brand	DURBAL
N° Ean13	3663952494739
Inside diameter	22 mm
Inside diameter	0.866" inch
Outside diameter	54 mm
Outside diameter	2.126" inch
Thickness	28 mm
Thickness	1.102" inch
Type	SA
Weight	480 g
Thread	Left-hand thread
Lubrication	without
Packaging	1

contact@123bearing.com

(646) 712 9672

CRT4 de Lesquin 60 Rue Du Haut De Sainghin 59273 Fretin FRANCE