

## SI Rod end SI25-PK-DURBAL - SI25-PK-DURBAL

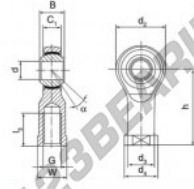
<https://www.123bearing.com/bearing-housing/rod-end/si/si25-pk-durbal>

### SI25-PK



female thread;  
maintenance free,  
according to  
DIN ISO 12240-4,  
series K

Description: DIN ISO rod end K series. Sliding combination steel / bronze-PTFE composite.



rod end body:  
surface case plated

Sliding combination:  
steel / bronze-PTFE composite

inner ring:  
bearing steel hardened and ground

Outer ring:  
rod end body pressed around, outer race  
lined with bronze-PTFE composite

Lubrication:  
maintenance free

order number	measurement (mm)	
SI 25 PK	d 25	g M 24 x 2
	h 31	C1 22,00
	d1 61	d2 33,5
	d3 42	

type	measurement (mm)			load rating	weight
SI / SIL 25 PK	ly min 42	w 36	h 94	C0 (DN) 85,00	(kg) 0,720

## PRODUCT FEATURES

Brand	DURBAL
N° Ean13	3663952492315
Inside diameter	25 mm
Inside diameter	0.984" inch
Outside diameter	61 mm
Outside diameter	2.402" inch
Thickness	31 mm
Thickness	1.22" inch
Type	SI
Weight	720 g
Thread	Right-hand thread
Lubrication	without
Packaging	1

[contact@123bearing.com](mailto:contact@123bearing.com)

(646) 712 9672

CRT4 de Lesquin 60 Rue Du Haut De Sainghin 59273 Fretin FRANCE