

SI Rod end SI20-PK-DURBAL - SI20-PK-DURBAL

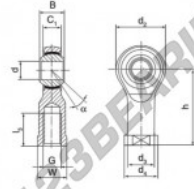
<https://www.123bearing.com/bearing-housing/rod-end/si/si20-pk-durbal>

SI20-PK



female thread;
maintenance free,
according to
DIN ISO 12240-4,
series K

Description: DIN ISO rod end K series. Sliding combination steel / bronze-PTFE composite.



rod end body:
surface case plated

Sliding combination:
steel / bronze-PTFE composite

inner ring:
bearing steel hardened and ground

Outer ring:
rod end body pressed around, outer race
lined with bronze-PTFE composite

Lubrication:
maintenance free

order number	measurement (mm)					
SI 20 PK	d	G	B	C ₁	d ₁	d ₂
SI 20 PK	20	M 20 x 1,5	25	18,00	51	27,5
	measurement (mm)			load rating	weight	
type	l ₁ min	W	h	C ₀ (N)	(kg)	
SI / SIL 20 PK	33	30	77	57,00	0,420	

PRODUCT FEATURES

Brand	DURBAL
N° Ean13	3663952492230
Inside diameter	20 mm
Inside diameter	0.787" inch
Outside diameter	51 mm
Outside diameter	2.008" inch
Thickness	25 mm
Thickness	0.984" inch
Type	SI
Weight	420 g
Thread	Right-hand thread
Lubrication	without
Packaging	1

contact@123bearing.com

(646) 712 9672

CRT4 de Lesquin 60 Rue Du Haut De Sainghin 59273 Fretin FRANCE